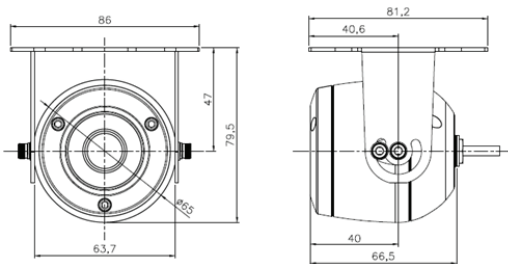


# SVAN-MES51



## Dimensions



## Product Summary

- 2.0 Mega pixel 1/2.8" SONY progressive scan CMOS image sensor for excellent image quality
- Special mechanical hardware
- 2.9mm MP lens
- Low light, Ultra high sensitivity camera
- Max. Transmission Distance : 600M Over Coaxial Cable
- Supports image resolutions up to 1920 x 1080P (30fps)
- Supports D-WDR, Defog, 2D+3DNR, Smart IR, Slow Shutter Control (Sens-Up)
- HD-Analogue Video Output
- Dynamic Motion Detection
- Privacy Masking up to 4 areas
- Tool-Free 3-Axis
- 12VDC

## Major Specifications

\* OSD Menu is subject to change without prior notice

Model Name		SVAN-MES51
Camera	Image sensor	Sony 1/2.8 inch 2.1MP Exmor R Starvis CMOS Sensor
	H. Resolution	1100TV Lines
	Total Pixels	1945(H) x 1109(V) 2.16 Megapixel
	Effective Pixels	1945(H) x 1097(V) 2.13 Megapixel
	S/N Ratio	More than 52dB (AGC OFF / Weight ON)
	Min. Illumination	0.1 Lux
	Day & Night	COLOR
	Lens	2.9mm / Megapixel Lens
OSD	PRIVACY MASK	ON/OFF (4 zone)
	MOTION Detection	ON/OFF (4 zone)
	MIRROR	OFF / MIRROR / V-FLIP / MIRROR
	FREEZE	ON/OFF
	Min. Illumination	0.1Lux
	White Balance	AWB / ATW / AWC -->SET / INDOOR / OUTDOOR / Manual (2,000°K ~ 20,000°K)
	Shutter Speed	AUTO / MANUAL (1/30 ~ 1/50,000 NTSC, 1/25 ~ 1/50,000 PAL)
	Sens-up	AUTO / OFF (Selectable Limit x2 ~ x60)
	BLC	ON/OFF/HSBLC/D-WDR
	Gain Control	0 - 15 Level
	2D/3DNR	ON / OFF (0~100 Level)
	DAY / NIGHT	AUTO / COLOR / BLACK & WHITE / EXT
	SHARPNESS	0 ~ 10 (Level adjustable)
	D-WDR	ON/OFF(Level Control)
	Flickerless	AUTO/ON/OFF
	LENS Shading	ON / OFF
	DEFOG	ON / OFF
Language	ENG / ARB / HEB / JPN / KOR / TUR / NED / POR / RUS / POL / SPA / ITA / FRA / GER / CHN2 / CHN1	
Physical	Power Source	12VDC
	Operating current	120mA
	Net Weight	520g
	Dimension	65mm(Dia. Ø) x79.5mm(H)
General	Operating Temperature	-20 degree~ 100 degree Celsius