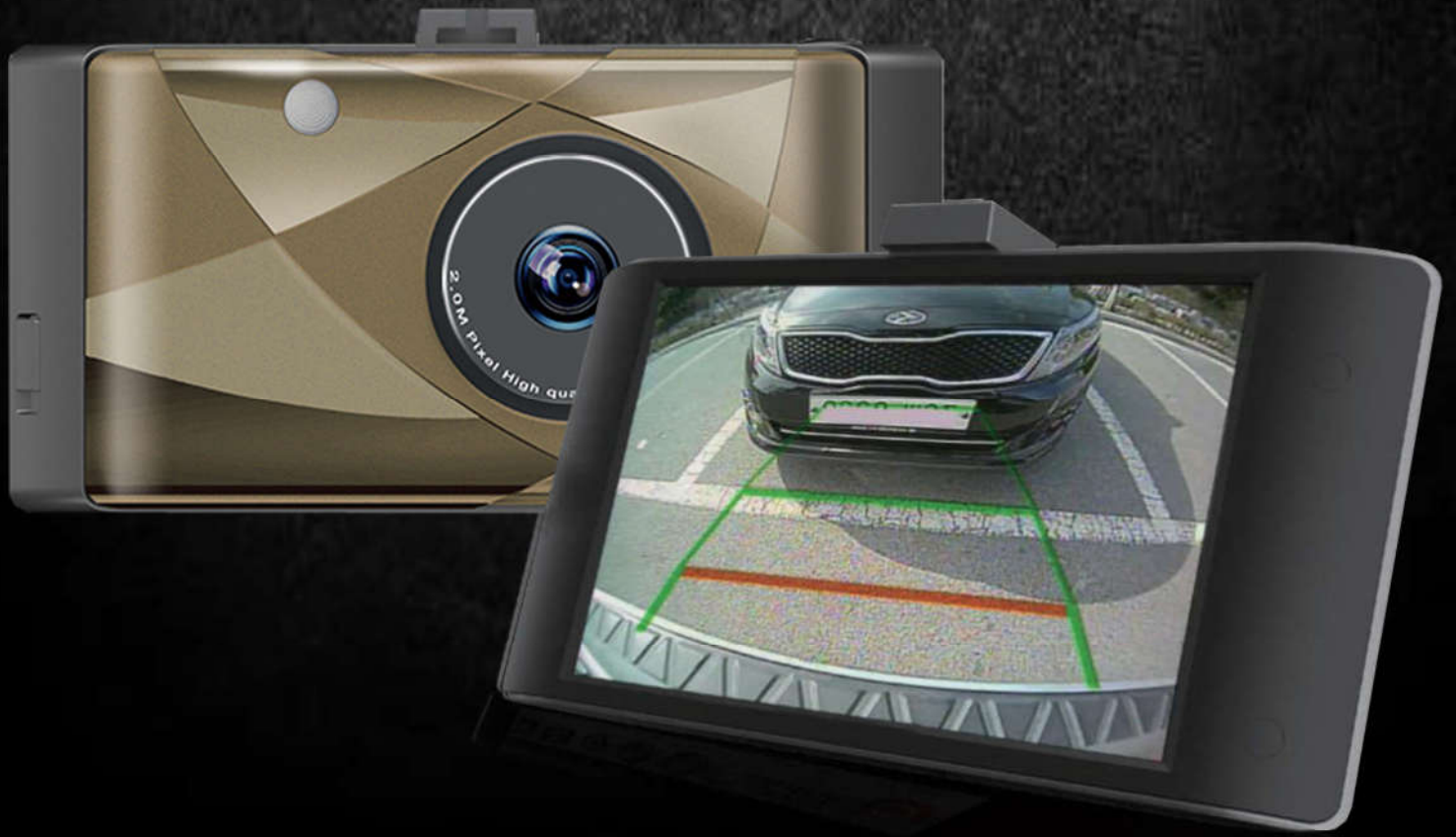
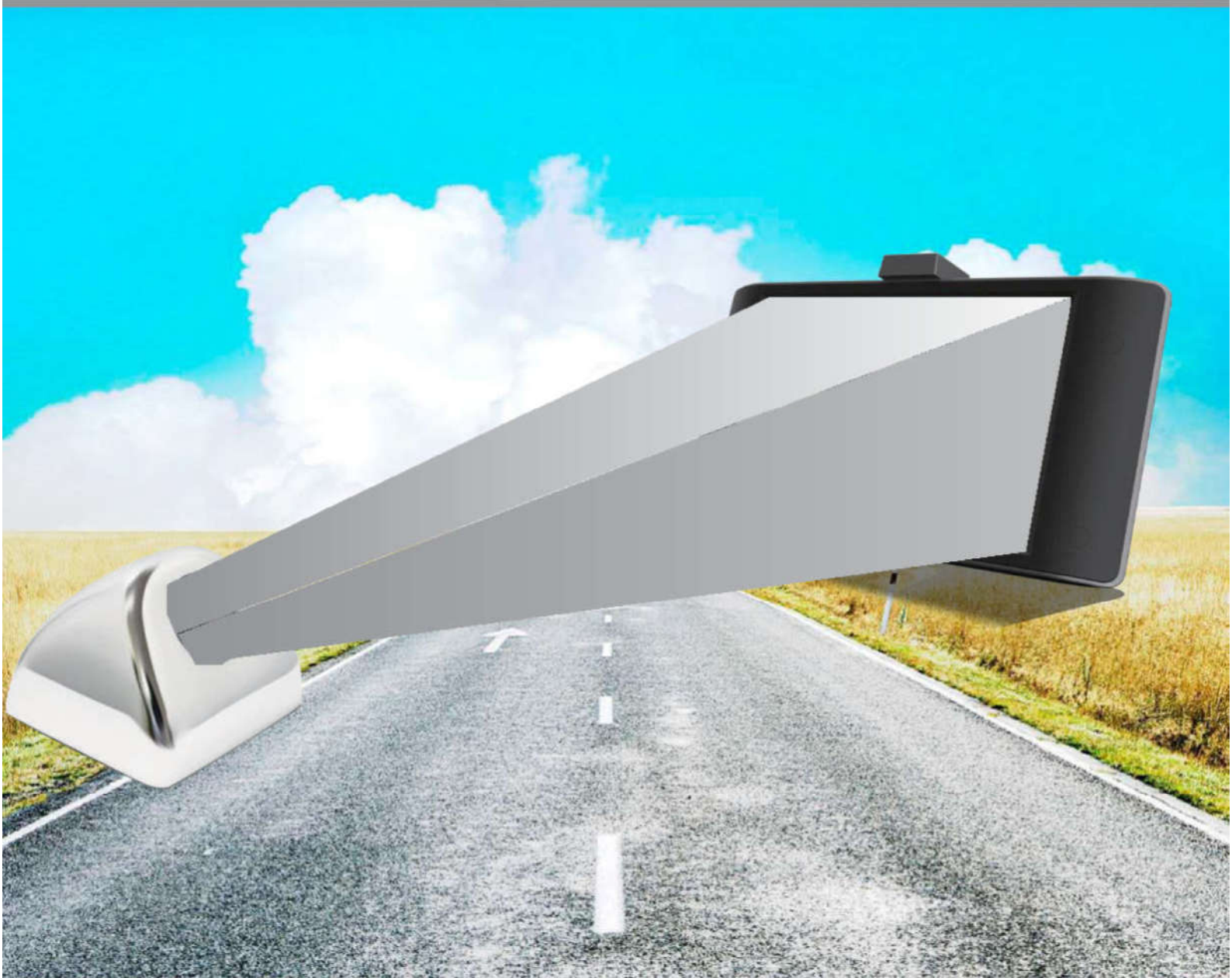


Backup cam blackbox

SVM-2000

Blackbox can support backup camera

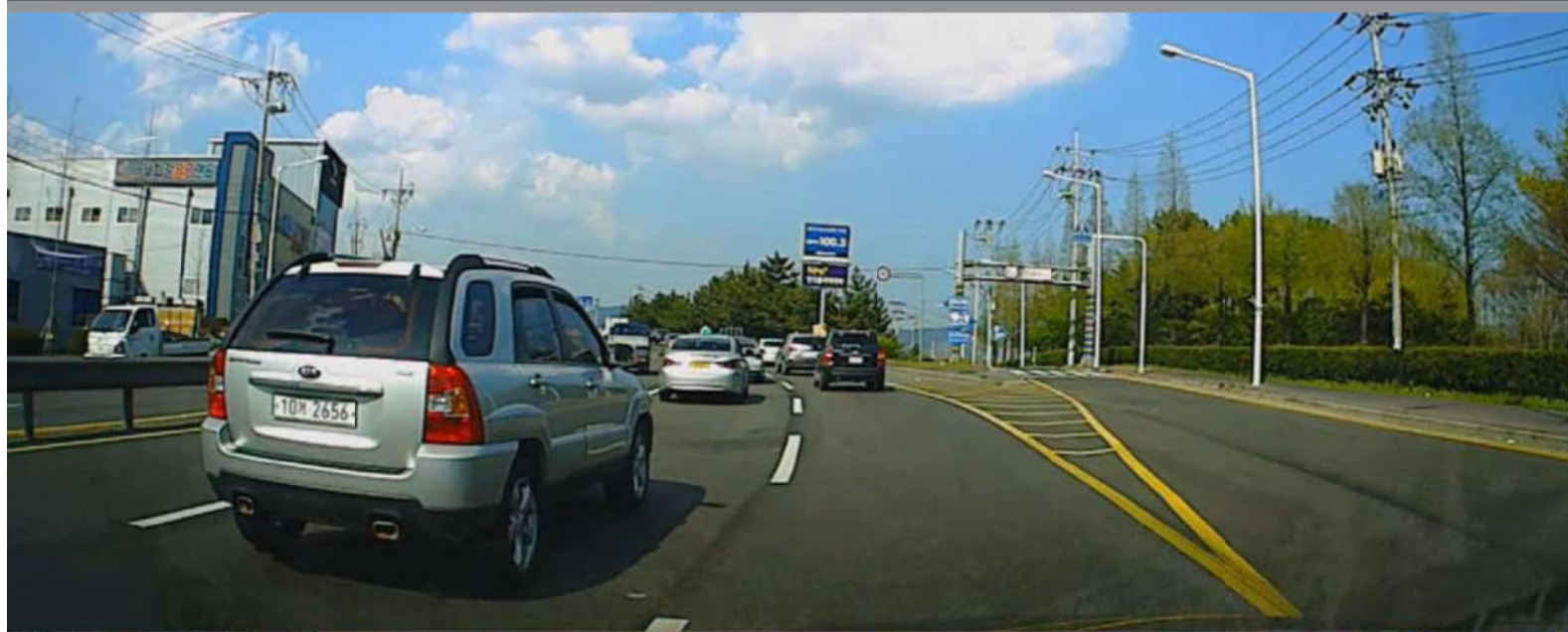




Blackbox + Parking camera

Backup cam blackbox

- ▶ An car set the gear in Backup mode during driving, device the back view and shows the video in screen.
- ▶ If driver does not use back-up function, blackbox rear camera record in SD card.
- ▶ SVM-2000 also install to the truck using extension cable



Glowing image revision

High-quality HD resolution

- The device had done a lot of test for clearly image, it provides high-definition image during anytime.
- No cut-off image with HD(1280X720) resolution with 30 frame.



Easy to use for user 4Inch Full Touch LCD

- Check the real-time image and recording file via 4-inch screen.
- Full touch screen can use easily for everybody.



See the video and function Multi GUI mode

- ▶ Upper-side icons can check the blackbox setting and lower-side icons can control the functions.
- ▶ SVM-2000 is comprise of simply, so it can use easily for user.
- ▶ All function and menu can enter by touch only twice.



Event recording for crash

Sensitive damage detected system

- ▶ High performance damage detected system is detected crash during driving and parking, and save the event file.
- ▶ SVM-2000 is more sensitive than others, it saved event to detect the tiny crash.



▶ 12V



▶ 24V



Prevent for discharge car battery

Battery discharge protection device

- For prevent during parking mode, device has timer and voltage cut-off setting mode.
- If the voltage is below set-up voltage, the power to the device is automatically turned off to eliminate the battery discharge.

Components



Device



Backup camera



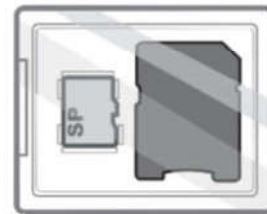
Power cable



Backup camera cable



Bracket



Micro SD card (16G)



Backup camera extension
cable 3M (option)



GPS(option)

Specifications

Model Name	SVM-2000 (HD-2CH Mobile DVR)	
Front camera	1.3M Pixel High-quality CMOS Sensor / Lens Degree 120°, F=2.0	
Rear camera	0.3M Pixel CMOS Sensor / Lens Degree 120°, F=2.0	
Resolution	Front HD(1280x720) + Rear D1(720x480)	Real-time recording
Recording speed	Front 30 Frame + Rear 30 Frame	
Video compression format	H.264	
Voice recording	Apply / PCM methods	
Recording mode	Normal / Event / Parking(Motion detection) / User recording	
G Sensor	Embedded (3 steps sensitivity)	
Speaker	Embedded	
MIC	Embedded	
GPS	External Type	Option
Battery back-up	Embedded lithium polymer battery	
LED Security	Front Security LED	
Operation temperature	-10°C ~ 60°C	Embedded temperature sensor
Keeping temperature	-20°C ~ 70°C	
DC power	DC 12V / 24V	
Current sinking	Max 460mA/12V	
	(Current sinking is changed by operation condition.)	