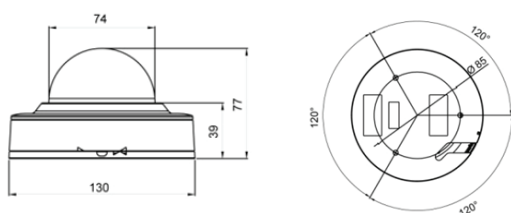


## SVNI10C71AR



## Dimensions



## Product Summary

- 4 Mega pixel 1/2.8" SONY progressive scan CMOS image sensor for excellent image quality
- 2.8mm Wide angle Megapixel Board Lens (Option: 3.6mm)
- 30M IR Beam Distance (4 Built-in High Power LED's)
- Triple Stream
- Supports image resolution up to 4MP
- 2688(H)x 1520(V) 4MP Max. 30fps
- Supports VBR/CBR in H.264 / H.265
- Controllable frame rate
- Supports WDR, Defog, 2D+3DNR, Smart IR
- Digital PTZ
- Corridor view
- Tool-Free 3-Axis
- 12VDC/ IEEE802.3af POE
- Conformant with ONVIF (Profile-S)
- Includes Windows based IP Installer and license-free 16 channel NVR(Network Video Recorder) software

## Major Specifications

\* OSD Menu is subject to change without prior notice

Model Name		SVNI10C71AR
System	CPU	ARM Cortex-A9 (816 MHz, Instruction cache : 32kbyte, data cache : 128kbyte-L2, FPU)
	Flash	2Gbit Flash memory
	SDRAM	2Gbit DDR3 Memory
Camera	Image sensor	4 Mega 1/2.8" SONY progressive scan CMOS image sensor
	Total Pixels	3096(H) x 2218(V) 6.87 Megapixel
	Effective Pixels	2688(H) x 1520(V) 4.13 Megapixel
	S/N Ratio	More than 50dB
	Min. Illumination	0 Lux (IR On)
	IR Distance	20M ( 4 Built-in High Power LED's)
	Day & Night	ICR Filter changer
	Lens Control	Manual Lens Control
	Lens	3.6mm Megapixel Lens
Video	Video compression	H.265 / HEVC Main profile level 4.1 encoding H.264 High Profile@4.1, MJPEG
	Resolutions	Up to 2688 x 1520 @ 30fps
	Frame rate	H.265 / H.264 UP to 30fps with 2688x1520 H.265 / H.264 UP to 30fps with 1280x720 H.264 / M JPEG UP to 30fps with VGA
	Video streaming	Adjustable frame rate, CBR/VBR in H.264
	Image setting	Brightness, contrast, Sharpness Day & Night Auto White Balance Auto Exposure Privacy Mask 3DNR(ON/OFF) V-Flip, etc. WDR, ATR
System Integration	Security	Password Protection, User access log, HTTPS encryption, User access log
	Supported protocol	HTTPS encryption, HTTP, HTTPS, DNS, RTSP, RTP, TCP, UDP, ICMP, DHCP
	Intelligern Video	Motion detection (12x12 blocks)
	Alarm Trigger	Motion detection
	Firmware upgrade	Remote upgrade via network
	Etc	1 x Factory Reset Button
Physical	Power Source	DC12V/1.5A, PoE(Power over Ethernet): 802.3af
	Power Consumption	Max. 3.5W Max. 5.0W with IR On
	Net Weight	500g (camera only)
	LED's	Power, Network Connection
	Dimension	80.5mm(W) x 148.4mm(H) x 206mm(D) including bracket
General	Operating Temperature	-10 degree~50 degree Celsius(14F~122F)
	Storage Temperature	-20 degree~60 degree Celsius(-4F~140F)
Software	Included Software	NVR Lite (16 Channel), IP Installer (Windows only)
	Package Contents	Network Camera, Use Manual, External Power Adaptor(option)