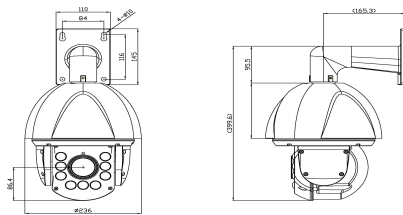


# SVNP20255XR



## Dimensions



## Product Summary

- 2 Megapixel Full HD
- Built-in Fan/Heater
- 20x Auto Focus (f4.7~94mm)
- 200M IR distance
- IR sync with Zoom (10 levels) and IR On/Off
- WDR (Low/Middle/High)
- H.264: 30fps/1080p, MJPEG: 30fps/VGA
- Full Duplex two way Audio support
- UPnP supported
- External sensors or external alarm devices
- HTTPS supported (Hyper Text Transfer Protocol Secured)
- Integrated E-mail, FTP, DDNS and DHCP client

## Major Specifications

\* OSD Menu is subject to change without prior notice

Model		SVNP20255XR
Camera	Image sensor	1/2.8" Type " Exmor R" CMOS Sensor
	Day & Night	True Day/Night (ICR)
	Environment	IP66
	Optical Zoom	20X
	Digital Zoom	12X
	Lens	20x AF zoom ( f4.7~94mm )
	IR Distance	200M
	Min. illumination	0 Lux with IR
	Pan / Tilt	Pan: 360 Endless , Tilt: -0~90 deg (Auto flip) PAN/TILT Speed: Preset 250deg/Sec,Manual 0.1~120deg/Sec
	WDR	Low/Middle/High
Noise Reduction	2D+3DNR	
White Balance	Auto,ATW,Indoor,Outdoor,Onepush WB,Manual WB,Outdoor Auto	
Video	Compression	H.264 High Profile @Level5.0 @Level4.1(Other resolutions), Motion JPEG
	Resolutions	Up to 1920 x 1080
	Frame rate	H.264 Up to 30fps with 1920x1080 H.264 Up to 30fps with VGA resolution. MJPEG Up to 30fps with VGA resolution.
	Video streaming	Support multi stream with H.264, MJPEG, H.264+H.264+MJPEG Triple Adjustable frame rate, VBR/CBR in H.264
Audio	Image setting	Day & Night, Auto White Balance, Auto Exposure, Privacy Mask, D-WDR, 2DNR/3DNR,DSS,Mirror/V-Flip, Corridor-View(in H.264)
	Audio streaming	Two-way, full duplex
	Compression	G.711
	Sample Rate	8KHZ
	Data Rate	64Kbps
Control	Audio input	Microphone input / 1 x Line-In (Mono)
	Audio output	Line output/ 1 x Line-Out (Mono)
Network	RS-485	1PORT
	Security	Password protection/ User access log / HTTPS encryption
System integration	Supported protocol	HTTP, HTTPS, FTP, SMTP, UPnP, DNS, DynDNS, NTP, RTSP, RTP, TCP, UDP, ICMP, DHCP,SNMP,IP Filter
	Intelligent video	Motion detection up to 1920x1080 with 12x12 blocks
	Alarm trigger	Motion detection (4 x Sensor in, 2 x Alarm out)
	Alarm events	File upload via ftp, E-mail, Notification via Email, FTP and TCP
	Video buffer	5MB pre-alarm and post-alarm-180sec
	Recording	Save to MicroSD/SDHC card with event mode and continuous mode
	Firmware upgrade	Remote upgrade via network
Physical	API	CGI Interface document,ActiveX Interface(ocx(dll) + document)
	RESET Button	1 x Factory Reset Button (SIDE)
	Power Source	AC24V 2.5A
	Power Consumption	Normal: 13W, IR ON: MAX 35W(VA)
	Weight (Appr.)	4,500g
Environment	LED's	Network Connection
	Dimension(mm)	236mm X 399.6
	Operating Temp.	-25 degree~50 degree Celsius (-13F~122F)
Software	Storage Temp.	-30 degree~60 degree Celsius (-22F~140F)
	Included Software	NVR C/S (16 Channel), IP Installer (Windows Only)
Package Contents		Network Camera, User Manual, Software CD, External Power Adaptor (optional)