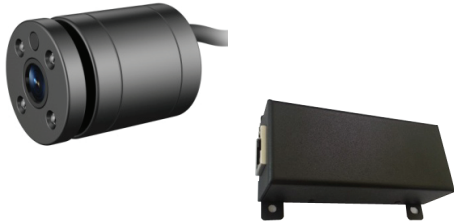
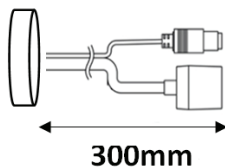


SVNS35161XR**Dimensions****Product Summary**

- 3 Mega pixel 1/2.8" SONY progressive scan CMOS
- Triple Stream
- Supports image resolution up to 3MP
- Supports VBR/CBR in H.264
- Controllable frame rate
- Supports WDR, Defog, 2D+3DNR, Smart IR
- Corridor view in H.264
- Tool-Free 3-Axis
- 12VDC/ IEEE802.3af POE
- Conformant with ONVIF (Profile-S)
- Includes Windows based IP Installer and license-free 16 channel NVR(Network Video Recorder) software

Major Specifications

* OSD Menu is subject to change without prior notice

| MODEL | SVNS35161XR |
|-----------------------|---|
| CPU | ARM1176JZF-S (400 MHz, Instruction cache: 32kbyte, data cache |
| Flash | 2Gbit Flash memory |
| SDRAM | 2Gbit DDR3 |
| Image sensor | 3.15 Mega 1/2.8" SONY progressive scan CMOS |
| Total Pixels | 2065(H) x 1565(V) 3.23 Megapixel |
| Effective Pixels | 2065(H) x 1553(V) 3.20 Megapixel |
| S/N Ratio | More than 50dB |
| Min. Illumination | 0 Lux (IR On) |
| IR Distance | 10M (4 Built-in Power LED's) |
| Day & Night | ICR |
| Lens | 2.8mm Lens |
| Video compression | H.264 High Profile@4.0, MJPEG-Image quality: 3 Steps |
| Resolutions | Up to 2048 x 1536 3MP |
| Frame rate | Triple Stream / 1st stream: 30fps@2048x1536 2nd stream: 30fps@640x480,3rd stream: 30fps@640x480 |
| Video streaming | Triple stream with H.264/MJPEG, Adjustable frame rate, CBR/VBR in H.264 |
| Pan/Tilt/Zoom | Digital PTZ |
| Corridor view | Corridor view in H.264 (90degree/ 270degree) |
| Image setting | Brightness, contrast, Sharpness,Day & Night,Auto White Balance Auto Exposure,Privacy Mask,DSS, Effect - Color, Mirror/V-Flip, etc. |
| Security | Password Protection, User access log, HTTPS encryption |
| Supported protocol | HTTP, HTTPS, FTP, SMTP, UPnP, DNS, DDNS, NTP, RTSP, RTP, TCP, UDP, ICMP, DHCP,SNMP |
| Intelligent video | Object based Motion detection up with 12x 12 block Tamper detection with Global scene change and defocus. |
| Alarm events | File upload via ftp, E-mail, Notification via email,SD Card. |
| Video buffer | 5MB pre-alarm and 180 sec (max) post-alarm |
| Firmware upgrade | Remote upgrade via network |
| API | CGI Interface document, ActiveX Interface(ocx(dll) + document) |
| Power Source | DC12V/1.5A, PoE(Power over Ethernet): 802.3af-Optional |
| Power Consumption | Max. 5W with IR |
| Net Weight | 140g(Excluding bracket) |
| LED's | Power, Network Connection |
| Dimension | 35mm(Dia.) x 63mm (H) |
| Operating Temperature | -10 degree~40 degree Celsius(14F~104F) |
| Storage Temperature | -20 degree~50 degree Celsius(-4F~122F) |
| Included Software | NVR C/S (16 Channel), IP Installer (Windows only) |