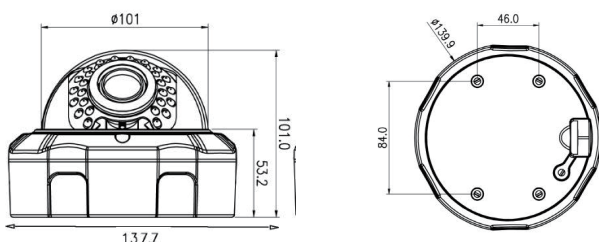


# SVP22T-VIR1030



## Dimensions



## Product Summary

- 1/3" Progressive CMOS Sensor
- TDN 30 IR LED
- Full HD (1920 x 1080 30P) TVI Video Out
- WDR (Wide Dynamic Range)
- 3D + 2DNR (Digital Noise Reduction)
- SENS UP, SMART IR, DEFOG
- HLMASK (High Light Masking)
- Privacy Masking, Motion Detection
- LSC (Lens Shading Correction), ACE,
- ACE (Adaptive Contrast Enhancer)
- 2.8~12mm Mega Pixel Lens (ICR)
- OSD (On Screen Display)
- CVBS Out (For Installer)

## Major Specifications

\* OSD Menu is subject to change without prior notice

MODEL NAME	SVP22T-VIR1030
Image Device	1/3" SONY CMOS, 2.43Megapixel
Total Pixels	2000(H) x 1241(V) / 2,482,000 (Pixel)
Effective Pixels	1984(H) x 1225(V) / 2,430,400 (Pixel)
Scanning System	Progressive Scan
Synchronization	Internal Synchronization
Horizontal Resolution	More than 1,000 TV Lines
Video Output	<b>TVI</b> / CVBS (For Installer)
S/N Ration	More than 50dB (AGC Off)
Lens	2.8 ~ 12mm DC Auto Iris Mega Pixel Lens
LED	30 LED
Storage Temp.	14°F ~ 122°F (-10°C~ + 50°C)
Operating Temp.	4°F ~ 140°F (-20°C~ + 60°C)
Humidity	Less than 80%
Power Source	DC12V 300mA
Dimensions	137.7mm(W) X 101mm(H)
Net Weight	Approx. 650g